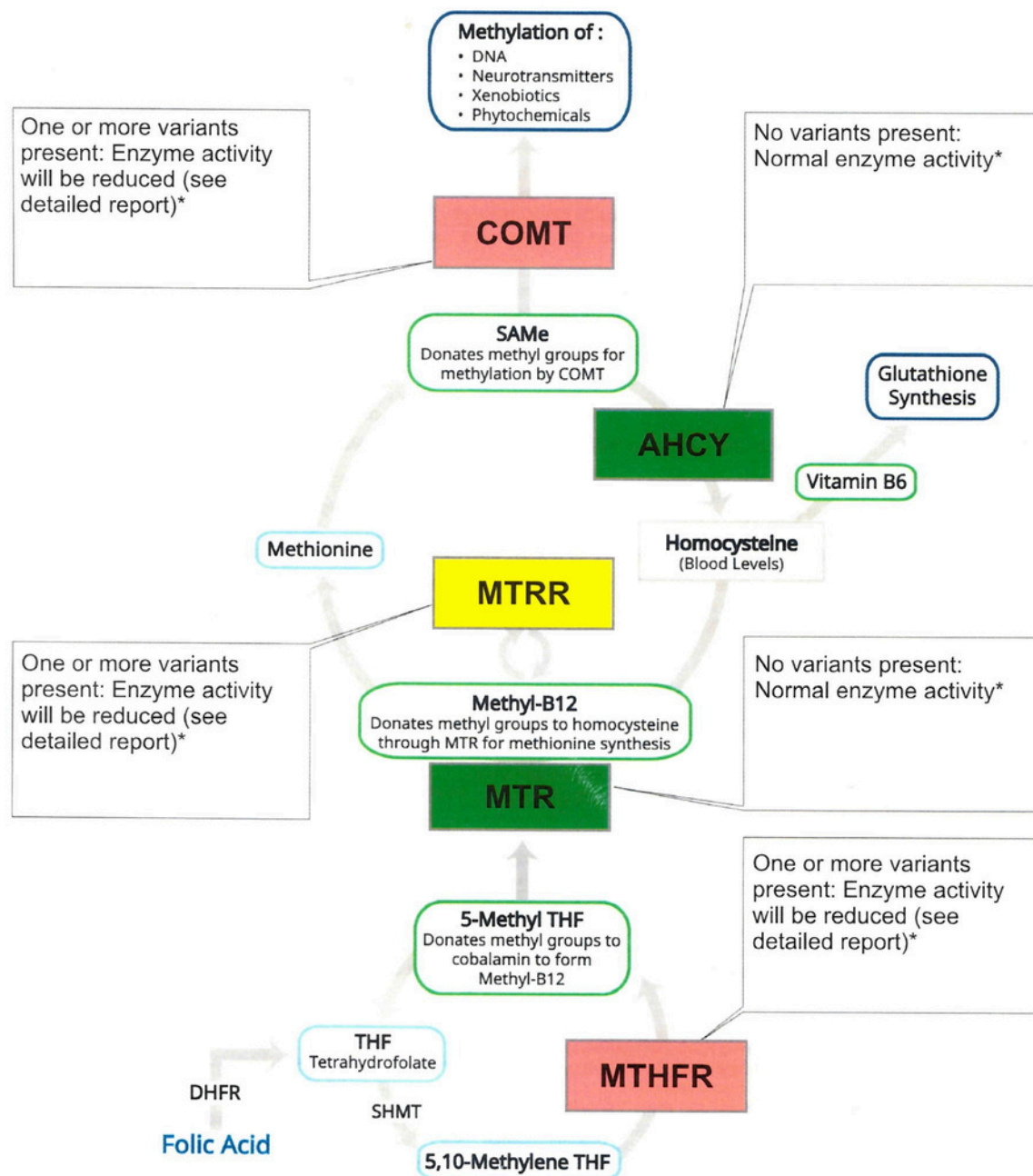


## Methylation Detoxification Cycle:



\* Note that variants other than those tested may contribute to the decrease in the enzyme activity. Proper nutrition can lead to balanced methylation, even when genetic variants exist.

\* This test was developed and its performance characteristics determined by Cell Science Systems. It has not been cleared or approved by the U.S. Food and Drug Administration.